



# Saguaro News

Newsletter of the SKP Saguaro Co-op  
Benson, Arizona



March 2009

## From the Board



The Annual Meeting is over and, as usual, was well attended. It's the time of year when we have the largest number of leaseholders in the park. If you were unable to attend, you may pick up your *Annual Report* in the office. Your new Board of Directors for 2009-2010 is:

Don Boston	President
Deanna Dupuis	Vice President
Maxine Vert	Secretary
John Billett	Treasurer
Faye Bragg	
Roger Kurtz	
Harry Melander	
Don Newport	
Graham Taylor	

Your Board of Directors looks forward to another great year. I think I can speak for the new members by saying that they are very excited to be aboard and look forward to joining the remaining six members in the everyday running of your Co-op.

The new recycling bin has been rebuilt and is in place. Bins have been provided for newspaper, plastic and cardboard. Aluminum cans will be recycled in the same manner as in the past. Recycling is the right thing to do! Not only does it help the environment; it eliminates the need for three dumpsters. This saves the park and YOU money.

The *Benson Food Bank* is in need of all the help they can get right now. With the economy down as it is, there are more people in need of help. The Saguaro Co-op prides itself in

supporting some of the community's needs. The *Scavenger Hunt* sponsored by the Cactus Wrens is a good example. Isn't that a fun way to provide a way to donate food items? Another fund raiser is planned for this month [*Extravaganza*]. Please support it. If you wish to donate personally, you may contact Food Manager, Cheri Padilla at 520 586-7916.

Due to the closing of the *Turquoise Hills Restaurant*, the regular SKP luncheon has been moved to *The Ironwood Grill* at the *San Pedro Golf Course*. Same time though - 11:30 A.M.

The Co-op continues to receive excellent reports from traveling SKPs. Not only is our park attractive, the people are warm and friendly. This sentiment comes through again and again on the comment sheets we receive. Take a minute and pat yourself on the back. We are already getting lots of positive comments about our Wi-Fi hotspot at the Clubhouse.

The Committees are all reorganized and are running smoothly. The Clubhouse has two new Co-Chairmen, Jo Ann Duncan and Pat Yecny. They both are coming in with a large amount of enthusiasm. We will still have the high quality of events that we have all grown to expect. A big thank you to Pat Bunselmeier and Molly Bandy for the excellent job they both did. They have given us many good times.

Although our activities are still in full swing, many leaseholders and renters are starting to make their travel plans. The open road beckons once more. This will be our last newsletter until September; your Board of Directors wishes you good health and safe travels. For you who remain here in the park, keep the home fires burning, or is it keep the air conditioners humming?

Maxine Vert  
Board Secretary



## From the Clubhouse

Jo Ann Duncan  
Pat Yecny



Pat Yecny and I would like to thank Pat Bunselmeier, Mollie Bandy, Faye Bragg, Kay Damkaer, Maxine Vert, Nancy Rose, Polly Davenport, Barbara Edmunds, and Stephen Strong. We would like to thank all the other volunteers that help this committee.

Our Steering Committee is as follows:  
Recording Secretary: Valerie Miller,  
Tables/Chairs: Alice Schulz, Ice Cream Socials:  
Polly Davenport, Calendar: Carole Melander,  
Stage Management: Stephen Strong,  
Clubhouse Bulletin Boards: Barbara Edmunds.  
**We still need a volunteer chairperson for Clubhouse Decorations. All of these Steering Committees will need volunteers to help them fulfill their commitments.**

March is our last month for entertainment as many of you will be off doing other things. Take a good look at the March Calendar and join us in the coming events. The second *Extravaganza* by Doug and Valerie Miller will take place March 6. Ron & Opal Erickson from Missouri will be here March 7. Dave and Eva Morey's grandson will entertain on March 11. The Elliotts will return March 14. We will have a new entertainer, Jeff Valdez March 19. A line dancing party will take place March 21. We will be closing the season with a sock hop March 28.

There will be lunches to attend and our morning coffee will still be alive.

Please check your calendar for dates and times of these and many other activities.

Our next clubhouse meeting is March 3. Come and join us.



## BLOOD PRESSURE CLINIC

*Norma Taylor*

Every Monday from 9am-10am a blood pressure clinic is held in Room 1. This is the opportunity to "check your numbers." A record

is given to you to maintain for your doctor visits, as well as for your own monitoring. If you use equipment at home and just want to check a manual read to see how it compares, bring your equipment with you and get a comparison on the spot. (On occasion we have found above normal highs or lows that suggests further checking out by your medical professional.) This is another NO-COST service from the Helping Hands Committee



*Al MacDiarmid*

On the Macintosh, go to iTunes and subscribe to the podcast "Apple Quick Tips." To do this, go to the Apple Store in iTunes and search for Apple Quick Tips. Click on the subscribe button. The tips are about one minute in length and when you have seen it, the little blue marker on the left disappears to let you know you have viewed that one. My favorite so far is that on a MacBook the delete key deletes to the left. To make it delete to the right, hold down the fn key and it reverses direction.

On a Windows machine, the Windows Logo key is a good shortcut key to memorize. Hold down the windows key and tap e. That brings up a copy of Explorer. Not Internet Explorer, but Explorer. If you do that again, you now have two copies. Right click on an empty area of the menu bar and select Tile Horizontally or Tile Vertically to have them nicely line up so you can drag files from one window to the other. Other keys do the following. They can be lowercase letters as well:

Windows Key + F

Brings up a finder box.

Windows Key + L

Lock your Windows XP computer.  
Windows Key + M  
Minimizes all open windows.  
Windows Key + Shift + M  
Restores all previously open windows to how they were before you Minimized them.  
Windows Key + F1  
Displays the Windows Help menu.  
Windows Key + Pause/Break  
Displays the Systems Properties dialog box.

On either Windows or Mac, the most important shortcut to memorize is the "oops!" key. In the following hints, Ctrl/Cmd means use Ctrl on Windows and Cmd on a Mac. Ctrl/Cmd z undoes the last action. If your e-mail letter suddenly disappeared, try that first.

When browsing to increase the font size, hold down the Ctrl/Cmd key and hit the = key until the size is where you want it. To decrease the font size, use - instead of =

In most browsers, when using tabs, ctrl/cmd click opens a link in a new tab instead of a new window.

#### Digital Photography:

The new version of iLife for the Macintosh has been upgraded with two new features. Faces allows one to train the computer to recognize faces and when new pictures of the faces come in, they are automatically named. Places allows locations of photos to be placed on a Google Map. It gets its data either from manual input or from the geocaching data now in some cameras. Go to Apple's web page to see a demo or watch the keynote speech.

## Drive your own vehicle? Willing to help a local community service?

*Andre Bernard*

Do you know what two of the local community transportation services do? The two being referred to are the *Catholic Community Services* program and the *VICaP* program. You may have seen the *Catholic Community Services* van in the park. This program transports local folks to Benson area services, such as medical appointments or shopping in Benson. *Catholic Community Services* does not go beyond the Benson area. So, what does an area neighbor do if he or she needs transportation beyond Benson?

You may have seen a couple of vehicles in our park sporting the "VICaP VOLUNTEER" sign. *VICaP* is a program of volunteers who drive Benson area community members who are homebound, elderly, or disabled to medical appointments in Tucson, Sierra Vista, and Willcox. *VICaP* will also help folks in the Benson area who live on the west side of the Cochise/Pima County line to do their shopping or medical appointments in Benson because *Catholic Community Services* is limited to the Cochise County/Benson area. *VICaP* will also accommodate folks living in St. David, Pomerene, and Cascabel for local shopping or medical appointments.

Consequently, if you have the time and the generosity to help area residents, become a *VICaP* volunteer. Contact Andre Bernard on lot #703 phone (707) 849 6862 or phone Judy Wise-Ray, the local *VICaP* volunteer coordinator living in Mescal, at (520) 586 2387 for more information.



## View From the Landscape

Marliss Johnston

Weren't those winter rains (and snows!) wonderful? The desert flowers should be spectacular this spring. Get your cameras ready and prepare to astound your unfortunate family and friends who don't live here.

We have from time to time commented on proper pruning methods for trees and shrubs in our park. If you look at the bare mesquite and palo verde trees, you'll see evidence of "topping" - thick, twisty growth sprouting from all of the branches at about the same distance from the ground. "Topping" is described as "the pruning of large upright branches between nodes," done to reduce the height of the tree. The following points are quoted from a Pima County Extension Service publication.

### “WHAT'S WRONG WITH TOPPING TREES?”

1. It is a source of invasion by rot-causing organisms.
2. It reduces the food-manufacturing capacity of trees.
3. New limbs that originate near the cuts are weakly attached and break easily in the wind. A regrown limb never has the structural integrity of the original limb.
4. Thick regrowth of suckers or sprouts has greater wind resistance leading to more storm and wind damage.
5. Topping does not help in keeping a tree smaller or lower in height.
6. It's expensive to have the tree re-topped every few years due to rapid, thick regrowth of branches.
7. It's ugly! The regrowth of a mass of straight suckers and shoots.
8. Informed people know that topping is not an accepted procedure."

I would add to item 6: It increases the amount of debris to be disposed of.

More on the subject of plant care: You may have noticed that early budding is occurring on some of the trees. If you plan to fertilize, wait until all

danger of frost is past, around mid-March. Fertilizing will encourage new growth, which is especially susceptible to frost damage. Also, it's best to wait a while before removing frost-damaged growth. It can act as an "insulator." If you have frost-sensitive plants (aloe, some cacti) you might consider covering them next winter - they'll be prettier in the spring.

The committee has personally contacted everyone who has volunteered to adopt a common area. If you want to participate in this program, contact the monthly committee representative (as noted on Channel 5). We'll provide you with a common area landscape plan and guidelines, and discuss your area with you. Your help will be greatly appreciated!



## April Fool's Day Pizza Party

Pat Horat



Everyone is invited to an all you can eat Pizza Party in the Clubhouse on April 1, and this isn't an April Fool's joke. The Bingo workers are the sponsors of this noontime event. Dave Peterson of the *National Pizza Parties* out of Tucson is the caterer. He catered the successful Omelet party last month that we all enjoyed.

There will be all you can eat Pizza, Salad and Dessert Pizza for \$7.50. The tickets will be on sale around March 20 at the office. Bring your own table service. Watch Channel 5 for details.

## VALLEY CRAFTER SHOW AND SALE

590 S. HUACHUCA STREET  
BENSON, AZ.85602

*Ruby Riddle 586-1908*

THURSDAY, MARCH 12 - 5PM TILL 8 P.M.

FRIDAY, MARCH 13 -----9AM TILL 7 P.M.

SATURDAY, MARCH 14 - 9AM TILL 4 P.M.

We are sorry to say that we no longer will be sending cards notifying you of the craft and bake sale. Cost of printing and postage is making it prohibitive for us to send cards to the Co-op and Presbyterian Church. Flyers, Channel 5, and the Co-op Newsletter will be our only notification.



## Labels and Boxtops for Education

*Andre Bernard*

*lot #703, phone (707) 849-6862*

Just inside the west entrance to the clubhouse are two jars. These are for labels for Campbell's soup and other products which aid two school systems. The qualifying products are listed near the jars.

LET'S DO BETTER THAN LAST SEASON!  
WHY NOT?

2007-2008: LABELS for EDUCATION = 350 points  
Supporting the Wenden Elementary School

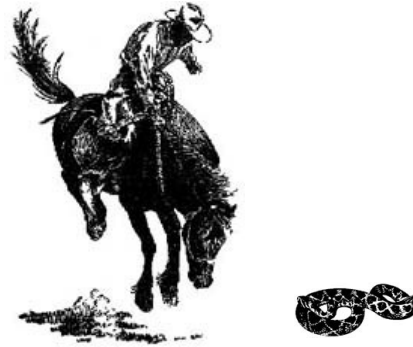
2007-2008: BOX TOP\$ for EDUCATION = \$33.00  
Supporting the Benson schools

Clip the coupons and put them into the jar in the Clubhouse.

BOX TOP\$ need an unexpired date.  
LABELS need the UPC code attached.

## THE SAGA OF TOMBSTONE TONY

*Mark Guinan*



Tombstone Tony was from Arizony  
Where they used to mine silver and gold.  
He was tougher than nails when it came to a scrap,  
But around the fair ladies he wasn't too bold.

One morning Tony was riding Paint his old pony  
Out in the cacti and bush,  
But old Paint stepped in a hole made by a mole.  
and bucked Tony off on his tush.

He lay there a gaspin' and said for "Goodness sakes!"  
For coiled up in plain view,  
Was something he knew,  
T'was a side-winder rattle snake.

He thought "I'll be a gonner!" when round the corner'  
Came a gal on a horse who dispatched the snake as she spake.  
"Aren't you Tombstone Tony, the scourge of those phonies  
That play in them Hollywood Western Macaronies?"  
(Try rhyming spaghetti westerns in there.)

"Ya I be old Tony, been throwed from my pony,  
And I sure be beholdin' to you ma'am.  
"If'n you'd not come along, the gatherin' throng'd  
Be singin' a song as they hauled me off to Boot Hill."

I don't go to church, so I'd be left in the lurch  
And I'd be buried with my boots still on.

(Editors Note: To be continued- Wait 'til Sept!)

## Kudos



From time to time, we will insert kudos to volunteers who are ***under recognized*** for their contributions. These will be chosen more or less at random and are meant to symbolize the many who make this park work so well.

Kudos for this month go to:

- ☺ Successful Blood Drive thanks to Loretta Williams and her fantastic crew.
- ☺ Beautiful Valentine Dinner presented Feb. 14 by Jo Ann Duncan and her team of chefs.
- ☺ Dynamite Food Drive and Scavenger Hunt with Cathy Stumpf and her team.
- ☺ Mary Nighswander for TLC of the kitchen.
- ☺ Bruce Radcliff for shop machinery repair.
- ☺ Dick Burnside and others for trips to Costco for Co-op food supplies.
- ☺ Volunteers for signing up to work on the new Un-Committee project for next year: They are Ellen Baraona, Doug Coughenower, Rosemary Hawkins, Althea Matthews, Eva Morey, Betsi Outland, Donna Struble, and Virginia Williams.
- ☺ Roxanne Stewart for her care of the Flea Market Table.

**Want to feel really, really good about your park?**

Go to:

<http://www.rvparkreviews.com/regions/Arizona/Benson.html>

Be sure to click on: *display older reviews for Saguaro Escapee Co-op Park*

**Ardi Ginkens**, Office Manager

Phone: 520-586-7343

FAX: 520-586-4683

Skpsaguaro@Escapees.Com

-----

**Doug Miller**, Facilities Manager

520-586-9430

Lot 222

(After hours emergency 520-686-0009)

*Saguaro News* Editor

**Ralph Feldt**

Lot 12

Please send submissions to:

***SaguaroNews@gmail.Com***

Deadline is the 15<sup>th</sup> of each month.

In accordance with the requirement to post rule changes in the newsletter, please read the following:

## SKP SAGUARO CO-OP LEASEHOLDER/RENTER RULES REVISED

*Jock Bliss*

To expedite the final review process, these citations include **only elements which have been revised or added**. If you believe that any of your previous comments which are not reflected here should be reevaluated, please resubmit them for us to reconsider.

Please review these possible changes and submit any further comments to the Rules Committee in writing within the next 30 days. Once the review period is over, the Rules Committee will again consider your observations and make any further adjustments/revisions they determine are needed prior to submitting a proposed final document to the By-Laws Committee and the Board.

February 16, 2009

### 1. OPERATION OF VEHICLES:

- B. **ALL** vehicles, *including golf carts*, **WHEN OPERATED AFTER SUNSET**, must have a *headlight* on the front and a red reflector on the rear and obey Arizona laws.
- C. Do not ride bicycles *or golf carts* on walkways.
- G. *All vehicles (RVs, Trailers, Utility Trailers, and Motor Vehicles) must possess current vehicle registrations and current license plates, **whether on lots or in storage.***

### 3. LOT REQUIREMENTS:

I. Outside storage along the sides of leaseholder buildings should be minimal and uncluttered, and must reflect consideration of the appearances from the perspective of the neighbors.

### 4. GARBAGE:

- B. **NO** outdoor garbage containers are allowed.
- C. **NO** landscape vegetation materials may be placed in the dumpsters. A trailer is provided in the storage area for this material
- D. Construction and remodeling material, and all other items – including vehicle batteries, tires, oil, paints or other **HAZARDOUS** materials **MUST** not be placed in or around dumpsters. It is the responsibility of the leaseholder to ensure the **removal from park property** of any such discarded materials. They should be transported to the Benson Transfer Station.

### 6. VEHICLE MAINTENANCE:

- A. Wash vehicles **ONLY** on your own lot. Use a serviceable hose with an automatic shut-off nozzle.
- B. **Routine** maintenance is permitted
- C. *Major repair or overhaul is not allowed.*

### 7. EXTRA VEHICLES:

- A. Leaseholders are allowed two RV's on their lot for a maximum of 5 days for maintenance and a maximum of 5 days before a trip and 5 days after with a permit clearly displayed.
- B. Utility trailers, car dollies and boats may not remain on a lot for more than five (5) days.
- C. *Under special circumstances, leaseholders may obtain a permit from the office to provide a single 5 day extension to these limits.*

### 8. GUESTS:

- A. All lot rentals **MUST** pass through the office.

## 11. PETS:

- B. No pets, other than helper dogs are allowed in any Co-op building, recreational area or on any lot other than the pet owners *without the permission of the leaseholder of that lot.*
- C. Pets shall be kept under **physical control** at all times.
- D. Pet defecation **MUST BE PROMPTLY CLEANED UP**, securely bagged and placed in a trash container by the pet owner. *Responsible pet owners will adhere to this procedure **both inside and outside the park,***

## 12. PROHIBITED ACTIVITIES:

- Door-to-door soliciting is not allowed, unless*
1. *approved by the Board of Directors.*  
**Personal preferences, religious, political or**
  2. **otherwise, will not be imposed upon others.**  
*?Co-op facilities may not be used for **partisan** political functions. This does not intend to prohibit or encourage having a forum, with the approval of the Board, to discuss local city/ county issues with or without candidates for office or elected officials.*  
*?Co-op facilities may not be used for religious **services** (defined as worship according to a prescribed form or order, e.g denominational, sectarian-specific religious activities). This does not preclude having a memorial service for a deceased leaseholder. The prohibition **does not** necessarily prohibit the singing of spiritual songs in programs presented on recognized religious holidays, nor of occasional spiritual songs as part of a SKP entertainment program, nor of a non-sectarian prayer before an organized meal.*

## 13. LOT APPEARANCE:

- A. **Major household appliances are not allowed outside the owner's RV or building.**

## 14. STORAGE AREA:

- A. A vehicle may be stored in the Co-op storage area on a space available basis, *with a permit from the office, with leaseholders having priority.* **Additional storage space may be rented, if available**